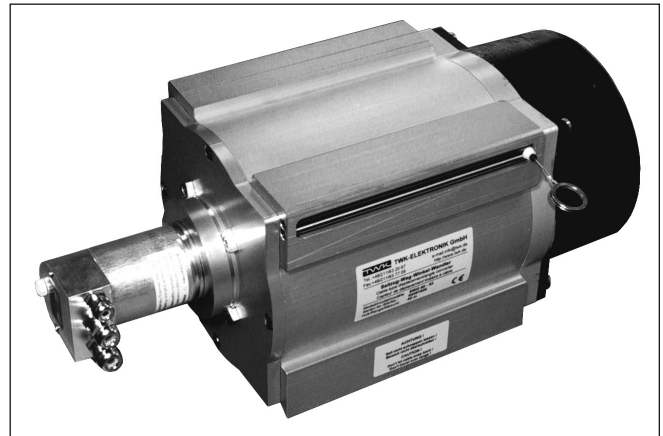


- **Very robust construction for mechanical engineering and industrial plant application**
- **For converting linear displacements of up to 60 m into a rotary movement**
- **For mounting onto an absolute or incremental encoder**
- **Easy to install and to use**
- **Protection grade IP 65 with exception of cable entry slot**



Functional description

The linear movement of a flexible steel cable, which can have a length of up to 60 m, is converted into a rotary movement with the aid of a measuring drum. The measuring drum is connected to the shaft of an encoder. In this way a change in displacement of the measuring cable causes the shaft of the encoder to rotate by a directly proportional amount which can be recorded.

The restoring force of the spring drive holds the measuring cable tight at all times and prevents any sagging which would otherwise induce an error. The measuring drum moves axially on a spindle ensuring that the cable is wound up precisely and reproducibly wrap for wrap in the helical groove of the drum.

The nozzle, through which the cable enters the drum, is protected with a brush and a bellow to prevent water or dust entering the drum. An additional grease chamber can be fitted upon request.

Technical data

- Measuring ranges: 50 and 60 m
- Drum circumference: 491.5 mm nom.
- Permissible cable speed: ≤ 2.0 m/s at 20 °C
- Permissible cable acceleration: ≤ 4.0 m/s² at 20 °C
- Force required to draw out the cable (start / end): 15 N max. / 30 N max.
- Cable material and diameters: highly flexible, stranded wire, (Stainless steel 1.4401) 1.35 mm (0.80 optional)
- Life expectancy of cable and spring: $\geq 10^6$ cable strokes
- Housing material: anodized aluminium
- Spring housing: aluminium, varnished
- Working and storage temperature range: -20 °C to +70 °C
-30 °C (optional)
- Protection grades: Housing IP 65
Cable entry IP 54
- Mass
 - SWL 50: 15 kg
 - SWL 60: 18 kg

Encoders in connection with cable-type converters

Generally encoders and converters are supplied as one unit. Upon request both items are also available as separate units.

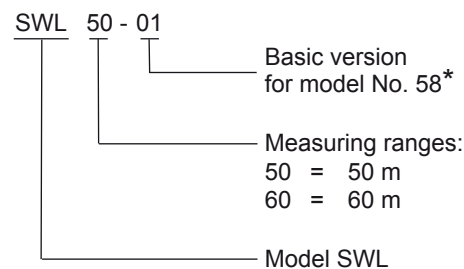
The following TWK-series of digital, incremental and analogue encoders with 58 mm dia synchro flanges can be mounted onto SWL-converters: CR, KR, DAF, TB, TM, GIO and GIM. Technical descriptions of such encoders are available as individual data sheets.

The following accessories can be supplied:

- Prolongator SWF-VX for cable.
- Adapter rings for encoders with the following mounting flanges: 50, 65, 66, 90 and 105.

For use under aggressive ambient conditions, e.g. in maritime climate, the converters can be supplied with a protective anodised hard coating.

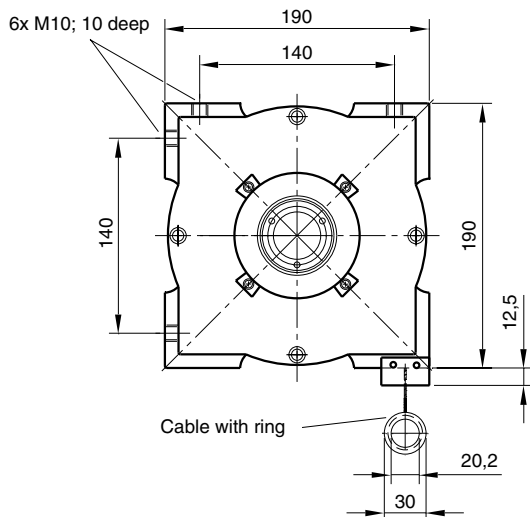
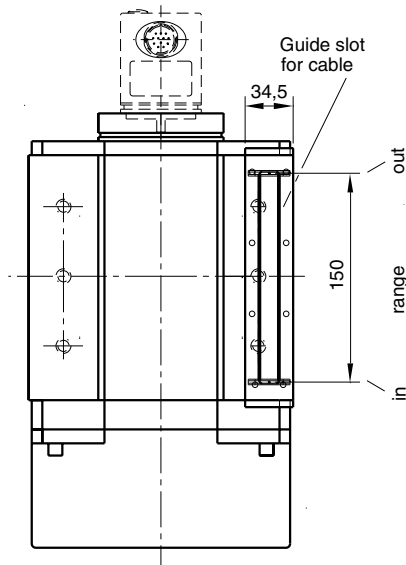
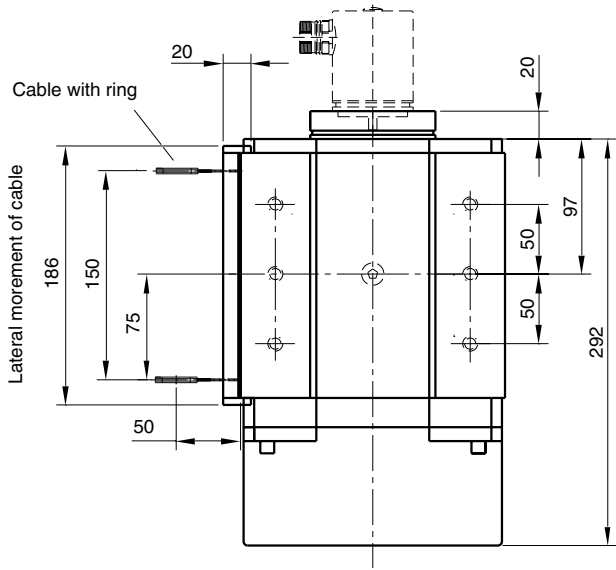
Order code format



* Variations from the basic version are indicated with a succeeding, additional number and are documented in our works.

Dimensions in mm

Model SWL 50



Model SWL 60

