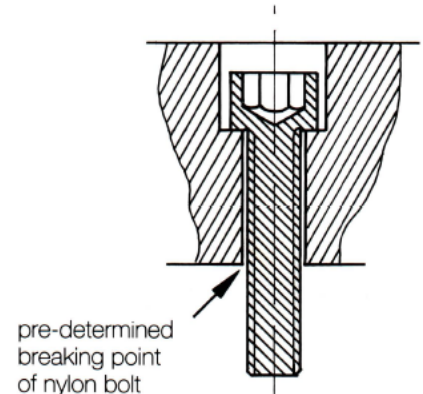
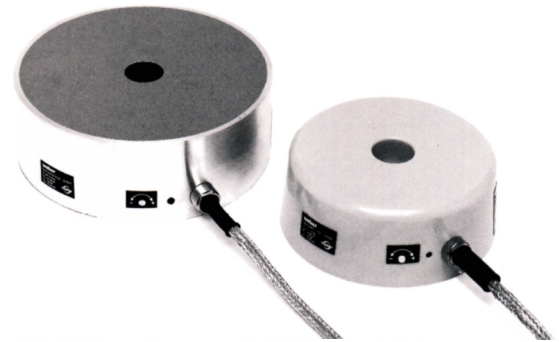


Types 2045.xx / 2090.xx / 2040.xx / 2080.xx / 2100.xx

proxi-captor products are rugged, inductive proximity switches which have been especially conceived for installation in harsh industrial environments. The simple nylon Allen bolt mounting of both proxi-captor series protects the units from serious mechanical damage in the event of a collision by breaking cleanly. Designed for heavy industrial applications the proxi-captors are fully resin encapsulated and constructed of durable material; types 2040.xx, 2080.xx, and 2100.xx are housed in resilient ABS plastic, types 2045.xx and 2090.xx have an aluminium housing designed for flush mounting. The high frequency oscillator in the proxi-captor is detuned when metal components approach and subsequently drives a switching stage via a trigger amplifier to give a reliable switching signal. The proxi-captor can be applied wherever switching distances vary, high switching frequencies occur or large sensing distances are concerned and where high repeatability is required.

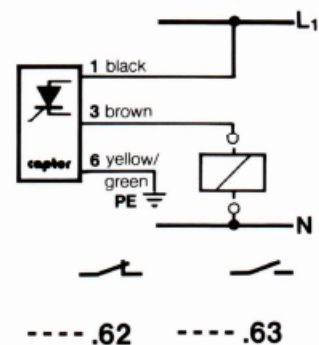
- compact and remote
- self-adjusting and adjustable proximity switches
- fully encapsulated
- no moving parts
- rugged aluminium or ABS plastic housings
- **ISO 9001:2008**

proxi-captor inductive proximity switches for contactless switching tasks in heavy industry, simple to install with center fixing bolt, adjustable switching range, short circuit protected, fully encapsulated electronics. These proxi-captors are available in different electrical versions for AC or DC applications with thyristor, antivalent transistor or other outputs on request.

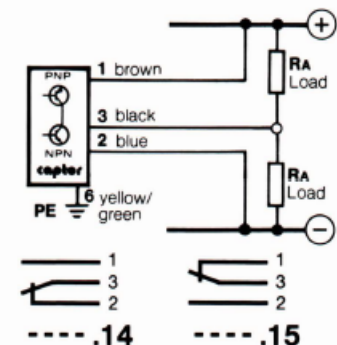


Connection diagram

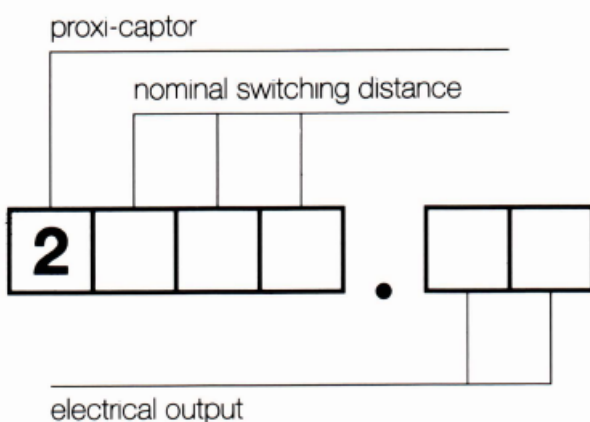
AC thyristor output



DC transistor output



Type code



Types 2045.xx / 2090.xx / 2040.xx / 2080.xx / 2100.xx

Electrical data						
		AC			DC	
Type	.62	.63	.14		.15	
output	thyristor			transistor		
Output function	n.c.	n.o.	NPN n.c.	PNP n.o.	NPN n.o.	PNP n.c.
Supply voltage	90 - 250 V			24 V		
Power consumption	approx. 0,45 VA open at 220 V			approx. 0.6 W		
Voltage drop	approx. 9,5 V at 30 mA			2.5 V at 400 mA		
Trip point for overload protection	approx. 350 mA			approx. 550 mA		
Switching current	5 - 200 mA			max. 400 mA		
Mechanical data						
Type	2040.xx	2080.xx	2100.xx		2045.xx	2090.xx
Installation	Center hole mounting with nylon Allen bolt					
Mounting screws	M 12 x 50	M 12 x 50	M 16 x 70		M 12 x 80	M 16 X 90
Connection	oilflex	oilflex	silicon amoured			
Cable/moulded	0,5 mm ²	0,5 mm2	0,75 mm ²			
Connection plug	watertight connection plug, UL approved available					
Mass	350g	800g	2300g		1300g	4400g
Dimensions in mm (dxh)	75 x 35	110 x 45	163 x 63		100 x 52	200 x 70
Nominal switching distance	40 mm	80 mm	100 mm		45 mm	90 mm
Correction factors	Fe= 1.0; CrN1 = 0.85; Brass = 0.54; Al= 0.5; Cu= 0.46					
Vibration and shock	in accordance with DIN 57 4 11					
Hysteresis	approx. 10 % of switching distance					
Housing material	ABS plastic				aluminium	
Protection standard	IP 65 / DIN 400 50					
Function indicator	LED					
Ambient temperature	-1 0 °C to + 65 °C (14 °F to 148 °F)					
Repeatability	better than 1 %					
Short circuit protection	max. 1 short circuit / s					
Custom-made models	on request					

Dimensions (cf. above)

